

McNeilus

AUTO REACH SIDE LOADER®



One of the strongest side loaders around, and the only side loader that can reach side to side.

- The only side loader that can articulate from side to side. The 8-foot arc allows for extreme agility around obstacles and tight spots.
- Arm rated to lift 2,000 pounds, one of the strongest among side loaders in the industry.
- Tandem pump allows for operation of all functions when at idle speeds, keeping noise and fuel consumption low.
- Grabber assembly can grasp cans from 30 to 110 gallons easily; optional extended fingers can handle cans up to 300 gallons.
- Maximizes efficiency and capacity, featuring a large hopper with 4.7 usable cubic yards.
- Excalibre™ cylinders designed exclusively for the AutoReach are specifically equipped to handle high cycle counts, as well as help manage cylinder life and total cost of ownership.

PERFORMANCE SPECIFICATIONS (in seconds)*

WORKING RPM @ IDLE

| | |
|------------------|-----|
| Arm In | 2.5 |
| Arm Out | 2.5 |
| Arm Up | 2.5 |
| Arm Down | 2.5 |
| Grabber Open | 1 |
| Grabber Close | 1 |
| Packer Extend | 12 |
| Packer Retract | 7 |
| Pack Assist Up | 2 |
| Pack Assist Down | 2 |
| Tailgate Open | 15 |
| Tailgate Close | 19 |
| Body Up | 14 |
| Body Down | 26 |

Compaction = up to 900 lb/yd

*Cycle times may vary slightly

ARM SPECIFICATIONS

| | |
|----------------------|--------------------------------------|
| Arm Style | Side mounted, articulating |
| Arm Lifting Capacity | 2,000 lb |
| Arm Reach | 8 ft, with side-to-side articulation |

HOPPER SPECIFICATIONS

| | |
|------------------------|--|
| Hopper Capacity | 4.7 cu yd |
| Lower Hopper Sides | Left: 3/16 in. AR200 Right: 10-gauge ASTM A607 grade 50 |
| Upper Hopper Sides | 10-gauge ASTM A1011/A1018 grade 50 high-strength steel |
| Hopper Floor Wear Area | 3/16 in. AR450 |
| Hopper Assist Panel | 12-gauge ASTM A1011/A1018 Grade 50 |

OPERATIONS

McNeilus multiplexed and distributed CAN-based controls, with air joystick, offer proven reliability and functionality

PACKER/EJECTOR SPECIFICATIONS

| | |
|---------------------|------------------------------------|
| Packing Face | 1/4 in. AR200 |
| Follower Panels | 10-gauge ASTM A1011/A1018 Grade 50 |
| Track & Wear Strips | Chromium carbide X-wear |

BODY SPECIFICATIONS

| | |
|------------|------------------------------------|
| Body Floor | 10-gauge AR200 |
| Side Walls | 1/8 in. AR450/AR200 |
| Roof | 12-gauge ASTM A1011/A1018 Grade 50 |

TAILGATE SPECIFICATIONS

| | |
|--|---------------|
| Tailgate Rear & Side Walls | 1/8 in. AR450 |
| Seven-Point Automatic Locking Tailgate | |

HYDRAULICS

| | |
|------------------|---|
| Pump | Dual Vane or Gear with Pack-on-the-Go flow control system |
| Oil Reservoir | 50 gallon |
| Return Filter | Schroeder K9 |
| Suction Strainer | 40 mesh stainless steel |

CYLINDERS

| | |
|-------------------|--|
| Packer Cylinder | 4-1/2 in. bore x 3 in. rod x 52-3/4 in. stroke |
| Tailgate Cylinder | 2-1/2 in. bore x 1-1/2 in. rod x 38 in. stroke |
| Grabber Cylinder | 2 in. bore x 1 in. rod x 6-1/4 in. stroke |
| Reach | 3-1/2 in. bore x 2 in. rod x 14-3/4 in. stroke |
| Lift | 3-1/2 in. bore x 2 in. rod x 17-8/9 in. stroke |
| Swing | 2 in. bore x 1-1/4 in. rod x 9-3/25 in. stroke |

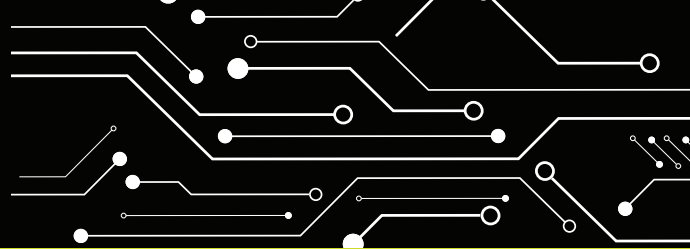
PAINTING

Packer and components steel shot blasted, then primed and painted separately to provide complete top coat coverage to all areas
Finish : PPG high-performance, high solids acrylic urethane topcoat

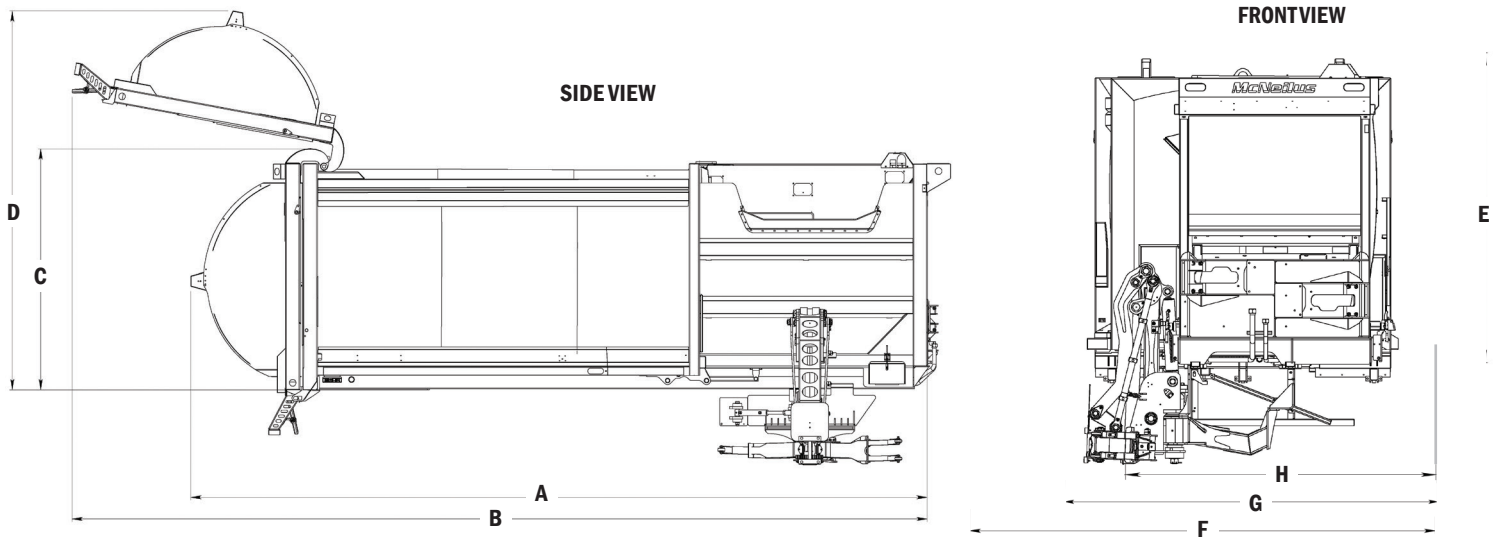
McNEILUS WARRANTIES

Contact your McNeilus representative on warranty details.
For more information, go to www.McNeilusGarbageTrucks.com

AUTO REACH AUTOMATED SIDE LOADER®



- McNeilus CNG Systems and Service offers compressed natural gas systems in a variety of configurations and capacities for the AutoReach.
- High-quality, abrasion-resistant steel in all high-wear areas for outstanding strength and durability.
- Industry's best factory-direct service and support network, with mobile service trucks ready to answer your call.
- Proudly made in the USA.



DIMENSIONS

| DESCRIPTION | 22 YD ³ (16.8 M ³) | | 24 YD ³ (18.4 M ³) | | 26 YD ³ (19.9 M ³) | | 27 YD ³ (20.6 M ³) | | 28 YD ³ (21.4 M ³) | | 31 YD ³ (23.7 M ³) | |
|---|---|---------|---|---------|---|---------|---|---------|---|---------|---|---------|
| (A) Overall Length, Tailgate Closed | 235 in | 5969 mm | 255 in | 6477 mm | 275 in | 6985 mm | 289 in | 7341 mm | 295 in | 7493 mm | 309 in | 7849 mm |
| (B) Overall Length, Tailgate Open | 307 in | 7798 mm | 307 in | 7798 mm | 347 in | 8814 mm | 361 in | 9169 mm | 347 in | 8814 mm | 361 in | 9169 mm |
| (C) Height: Tailgate Closed | 101 in | 2553 mm | 101 in | 2553 mm | 101 in | 2553 mm | 101 in | 2553 mm | 101 in | 2553 mm | 101 in | 2553 mm |
| (D) Height: Tailgate Open | 145 in | 3683 mm | 163 in | 4128 mm | 145 in | 3683 mm | 145 in | 3683 mm | 163 in | 4128 mm | 163 in | 4128 mm |
| (E) Max Height When Dumping | 124 in | 3150 mm | 124 in | 3150 mm | 124 in | 3150 mm | 124 in | 3150 mm | 124 in | 3150 mm | 124 in | 3150 mm |
| (F) Overall Width: Arm Out, Grbr Closed | 209 in | 5309 mm | 209 in | 5309 mm | 209 in | 5309 mm | 209 in | 5309 mm | 209 in | 5309 mm | 209 in | 5309 mm |
| (G) Overall Width: Arm In, Grbr Closed | 126 in | 3200 mm | 126 in | 3200 mm | 126 in | 3200 mm | 126 in | 3200 mm | 126 in | 3200 mm | 126 in | 3200 mm |
| (H) Overall Width: Arm In, Grbr Open | 102 in | 2591 mm | 102 in | 2591 mm | 102 in | 2591 mm | 102 in | 2591 mm | 102 in | 2591 mm | 102 in | 2591 mm |
| Grabber Height From Ground** | 13 in | 330 mm | 13 in | 330 mm | 13 in | 330 mm | 13 in | 330 mm | 13 in | 330 mm | 13 in | 330 mm |

**Dimension based on 40-inch chassis frame rail height. Actual dimension will vary depending on chassis measurement.

Note: Dimensions will change with roof/tailgate-mounted CNG options.



We offer a complete line of aftermarket parts and services to fit all makes and models. View and purchase at www.StreetSmartParts.com or call 888.686.7278.

Learn more at www.McNeilusGarbageTrucks.com | StreetSmartParts.com



© 2024 McNeilus Truck & Manufacturing. McNeilus the McNeilus logo, Street Smart Parts and the Steet Smart Parts logo are trademarks of McNeilus Truck & Manufacturing, Inc. Dodge Center, MN, USA. All other designated trademarks are the property of their respective owners. Specifications, descriptions and illustrations in this brochure are accurate as shown at the time of publication, but are subject to change without notice. Illustrations may include optional equipment and accessories and may not include all standard equipment.